

# Multi-Path Routing in Time-Division-Multiplexed Networks on Chip

Radu Stefan (R.A.Stefan@tudelft.nl)  
Delft University of Technology, The Netherlands

Kees Goossens (kees.goossens@nxp.com)  
Delft University of Technology & NXP Semiconductors

**Abstract**—The exponential increase in transistor count due to technological progress has resulted in an increase in complexity and processing power of on-chip elements. Recently a stage has been reached where it is not practical anymore to increase the core size, and as a consequence the number of cores, processing elements or peripherals is being increased instead. In this study we focus on improving the efficiency of a network between those processing elements using alternative routing strategies. We focus on a multi-path slot allocation method in networks with static resource reservations, in particular networks on chip (NoC) employing time-division multiplexing (TDM). The simplicity of these networks makes it possible to implement this routing scheme without significant hardware overhead. Our proposed method, although displaying large variations between test cases, provides significant overall gains in terms of allocated bandwidth, with an average gain across all tests of 29% against an exhaustive search of single-path routes, and gains of 47% when compared to other single-path routing algorithms.

## I. INTRODUCTION

In systems of increasing complexity, modularization is an essential procedure for allowing timely development. Modularization however relies on the ability of interconnecting the modules into complete systems. Networks on chip [1], [2] are an emerging paradigm for on-chip communication which simplifies the design of large systems and provides a scalable solution for connecting the on chip processing elements, memories and peripherals. As the interconnect has an increasing influence on the overall performance of the design, optimizing the networks on chip is an important direction of research.

The amount of allocated resources obviously has a direct influence on the achieved performance, however it is also of major importance how efficiently the available resource are used, as the simple increase in path width or router count also has the negative effect of increasing the area. From large-scale packet-switched networks we have learned that a major limit on efficiency is represented by congestion, while in circuit-switched networks the limitation consists of blocking during allocation and underutilizing the allocated channels.

We perform our study using the NoCs that employ a time-division-multiplexing (TDM) scheme for allocating bandwidth for connections, in particular the  $\text{\AE}$ thereal NoC. To limit the employed hardware resources, minimal buffering is provided, circuit-switched network flits having to depart from a router in the immediate next slot after arrival. This results in low end-to-end latencies, but requires an efficient slot allocation scheme for allocating time slots over the TDM shared links.

In this paper we propose a multi-path routing technique that performs slot allocation, at the same time ensuring in-order

delivery of packets. The method is used to improve utilization by taking advantage of the additional routing freedom provided by the multi-path approach, and is based on established algorithms known to be optimal in several respects. We show that, in some cases, a multi-path allocation scheme may offer significantly increased bandwidth over classical single-path approach when used on top of the same underlying network. In order to minimize the cost and reduce the impact of our method on the already existing hardware implementation in  $\text{\AE}$ thereal we use the static time slot allocation scheme to ensure in-order packet delivery.

The rest of the paper is organized as follows. In the following section we present related work, and usage of multi-path routing in other domains than networks-on-chip. In section III we give a description of our own proposed algorithms, followed by an analysis of required hardware resources in section IV. Experimental results are presented in section V while the last section presents our conclusions.

## II. RELATED WORK

A sizable amount of research has been invested in optimizing routing algorithms in both large scale and on-chip networks, of which a significant portion was dedicated to deadlock-free routing [3], [4], [5], [6].

In large scale networks, multi-path routing has already been in use for a long time, for example in Internet traffic engineering [7]. This problem is different for NoCs where in-order delivery is a requirement, because re-ordering buffers are expensive in comparison to off-chip networks.

The problem of multi-path routing in networks with resource reservation e.g. asynchronous transfer mode or ATM was studied by Cidon et al. [8], [9], and was shown to provide a benefit in terms of connection establishing time, while having mixed results from the bandwidth point of view.

Multi-path routing in NoCs has been previously proposed in [10], but because of the routing mechanism employed however, a more complex approach is required in order to ensure in-order delivery. Our solution ensures the delivery of packets in the right order without the need of additional hardware, by precomputing the packet schedule at design time.

Multi-path routing is also found in the various forms of adaptive routing or other forms of non-deterministic routing [11], largely addressed by studies of multiprocessors and now also applied to networks-on-chip [12], [13], [14], [15], [16]. The target of these studies is mainly guaranteeing deadlock

freedom while maximizing utilization, but without explicitly addressing the costs of in-order delivery.

Our study targets NoCs that support resource reservation using Time-Division-Multiplexing, in particular the  $\mathcal{A}$ ethereal network [17]. Our algorithm performs both routing and slot allocation.

The same technique can also be applied to other TDM networks described in the literature, like the Nostrum network [18], aSoC [19] and the TDM test delivery in [20] and perhaps also to networks using space division circuit switching like [21].

The authors of [22] propose a graph coloring algorithm to solve a slot allocation problem in a similar network implementation but with more relaxed constraints regarding timing.

A solution for performing mapping, routing, slot allocation in the  $\mathcal{A}$ ethereal networks, currently in used by the tool flow was presented in [23].

### III. PROPOSED ALGORITHMS

We propose and demonstrate a multi-path routing technique within the framework of  $\mathcal{A}$ ethereal [17]. The  $\mathcal{A}$ ethereal network offers a combination of packet and circuit switching mechanisms in the form of and guaranteed-throughput and (optional) best-effort services. As multi-path routing for packet-switched NoCs has already been addressed in the literature [10] our focus is on the circuit-switching like guaranteed services (GS).

In GS mode, the user requests dedicated channels between two IPs. A global, periodic schedule is created for the entire network at design time, and TDM slots are allocated to each connection according to the requested bandwidth. Packets are always forwarded immediately at each router and the schedule ensures that conflicts are not possible.

#### A. Pathfinding algorithm

We show that connections of larger bandwidth can be established over a network with preexisting traffic using the multi-path approach when compared to the standard single-path method. For GS traffic, the allocated bandwidth is directly related to the number of time slots that have been allocated to each connection, thus conferring the problem a discrete nature.

The problem of finding a set of paths of maximum capacity between two nodes in a graph has an established solution in the Maximal Flow Algorithm [24]. We use a variation of the flow algorithm, which also ensures that the total length of the paths found is minimal.

As mentioned before there are restrictions in the way the slots can be allocated on a given path. Each GS flit arriving at a network router will have to depart in the immediately following time slot, as no buffering is provided to store more than one flit. To adapt the algorithm to this additional requirement, we represent the network as a directed graph when each network node (router or network interface) is split into  $s$  nodes, where  $s$  is the number of time slots. The generated nodes are connected in a way which reflects the delay of traversing a network link and crossbar, as presented

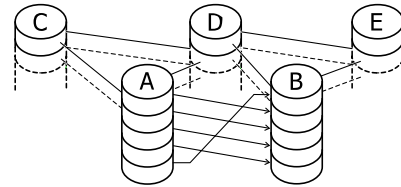


Fig. 1. Splitting nodes in a graph,  $s = 5$

in Figure 1. From the link from router  $A$  to router  $B$ , a flit departing from slot  $A_i$  will arrive to  $B$  in slot  $B_{(i+1) \bmod s}$ .

The flow algorithm considers each edge as having a capacity for transporting a commodity between two nodes. In our problem the commodity is represented by network flits and the capacity is always 1 as one edge represents one timeslot. We call flow the utilized capacity of each edge. The incoming and outgoing flow at each node must balance out at each node, in a way similar to Kirchhoff's Current Law, except for nodes marked as source and destination.

The flow algorithm starts on a graph with zero flow, and then iteratively increases the flow between source and destination, along augmenting paths which are determined based on the edge capacity which is still not utilized. If the augmenting paths are always chosen so that they have minimal cost, then the total flow is also guaranteed to have minimal cost [25]. As the already allocated flow increases and links become saturated, augmenting paths steadily increase in cost, until no further increase in flow is possible.

In general, any path finding algorithm can be used for determining an augmenting path, with one observation: the flow algorithm must be able to displace previously allocated flows to make room for new ones. For this, in addition to normal edges that are not yet saturated, the path-finding algorithm is allowed to traverse links used by previously found paths in the reverse direction, thus canceling out the flow on that segment. The cost of such traversal is negative, as the segment will be removed both from the previous and the current path.

An example is presented in figure 2. Assume that in the first iteration of the pathfinding algorithm, a flow was allocated on the  $A-B-E-F$  path. Clearly such a choice is unfortunate because it blocks all other paths from  $A$  to  $F$ . A new path will then be found in the form  $A-D-(E-B)-C-F$ . The common part (the  $B-E$  segment) will be erased from both solutions and the first two segments of the second augmenting path will be combined with the last one of the first augmenting path and vice versa.

The final solution consists of the paths  $A-B-C-F$  and  $A-D-E-F$  and has a cost of  $3 + 3 = 6$  so we can conclude that the contribution of the second path to the cost was 3, which is the sum of the cost of the "normal" edges  $A-D$ ,  $D-E$ ,  $B-C$ ,  $C-F$  and the negative cost of the reverse edge  $E-B$ ,  $4 + (-1) = 3$ .

There is one characteristic of the  $\mathcal{A}$ ethereal networks which further complicates the problem. Flits belonging to the same connection, traveling in consecutive time slots along the same path do not need to repeat the routing header, and as a result the useful payload to packet size ratio is improved. In order to deal with this additional optimization criterion we employ

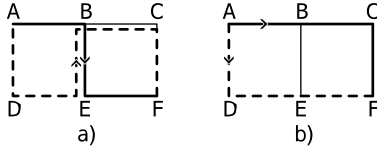


Fig. 2. Flow displacement, a) during search for augmenting path b) after the addition of the new path

a heuristic: once an augmenting path is found by the flow algorithm, we try to allocate more slots along the same route, if of course the new slots are available. This modification does not interfere with the proper functioning of the flow algorithm, because there is no restriction on the path finding algorithm we employ, and the allocated paths are of the same cost as the last path that was produced.

### B. In-order delivery

A common problem of routing algorithms that offer several alternative paths to the destination is that it creates a possibility for packets to arrive in another order than they were transmitted. This represents a significant problem in NoCs, because the cost of on-chip buffering for reordering the packets might be prohibitive. The guaranteed services offered by the  $\mathcal{A}$ ethereal NoC present an opportunity here because TDM slots are statically reserved and the sequence of arrivals can be controlled at design time.

The result produced by the flow algorithm is not guaranteed to contain only routes delivering the packets in the right order. The different delays of the shorter and longer routes may result in packet reordering. Our solution is to discard some of the routes, so that all remaining paths provide in-order delivery. We present here an algorithm for the selection of routes to be discarded.

The problem can be formulated as a Monotonic Subsequence Problem [26], for which optimal solutions exist with polynomial time complexity. The paths are ordered by slot departure time and the solution must comprise a subsequence with only increasing arrival times. Several modifications are again needed in order to take into account the particularities of our problem. Because consecutive slots have a different payload efficiency, the items in the sequence need to be weighted, and, the algorithm needs to take into account the wrap-around that occurs at the end of the slot table. In some respects the wrap-around is similar to the problem described in [27]. The first requirement does not introduce significant changes into the algorithm, but for the second, the algorithm will have to be applied repeatedly in a window which slides over the set of paths.

The algorithm is based on dynamic programming, and consists of generating partial solutions that are optimal with respect to our optimization criteria, and sufficient for ensuring the optimality of larger solutions. A formal description of the algorithm is given in Algorithm 1. The selection method is optimal in that it delivers the largest bandwidth possible for the given set of paths, which does not imply that the combination of flow and discarding algorithms is optimal.

**Data:** list of paths sorted by departure time, having known bandwidth and arrival time  
**Result:** reduced set of paths with in-order delivery

```

s ← number of time slots;
Duplicate paths  $p_1 \dots p_n$  as  $p_{n+1} \dots p_{2n}$  with delay s;
solution ←  $\emptyset$ ;
for  $\forall i \in \{1, 2, \dots, n\}$  do
  consider set  $Q = \{p_i \dots p_{i+n-1}\}$ ;
   $Q \leftarrow Q \setminus \{p_j \in Q \mid p_j \text{ arrives later than } p_{i+n-1}\}$ ;
  /* Q is the working window */
  initialize  $t_1 \dots t_{2n}, t_0 = 0$ ;
  for  $\forall p_j \in Q$  do
    best ←  $\emptyset$ ;
    for  $\forall p_q \in Q, q < j$  do
      /* find best partial solution to
      base current solution on */
      if  $p_q$  arrives before  $p_j$  and  $t_q > t_{best}$  then
        best ←  $i$ ;
        predecessor $_j \leftarrow q$ ;
      end
    end
     $t_j \leftarrow t_{best} + \text{bandwidth of } p_j$ ;
    /*  $t_j$  stores the bandwidth of the best
    partial solution having  $p_j$  as last
    element */
    if  $t_j$  is best solution so far then
      solution ← solution reconstructed by following the
      chain of predecessors of  $j$ ;
    end
  end
end
end

```

Algorithm 1: In-order path selection

### C. Algorithm complexity

In asymptotic notation ("big O" notation) [28], the multi-path approach has a higher complexity than the single path one. Intuitively, since multi-path implies that several paths have to be found, the solution is expected to be several times slower. In practice, the performance depends on which single path algorithm our method is compared to. As the single-path version may use different heuristics, its complexity varies.

Let's consider a simple implementation of the Dijkstra algorithm [29] for the single path solution. A reasonable implementation using priority queues for maintaining a sorted list of nodes as a complexity of  $O(V \log V + E \log E)$  where  $V$  is the number of vertices (network nodes) and  $E$  is the number of edges (network links). This does not take into account the fact that the heuristic has to check  $S$  available time slots for each traversed edge, so a fair estimate would be  $O(V \log V + E \log E + ES)$ .

For the flow algorithm, a reasonable implementation would be the Edmonds-Karp algorithm [25], which is further simplified by the fact that all edges have a capacity of 1, and all edge costs have a value of 1. With this restriction, finding a single augmenting path can be done in complexity  $O(E)$ . On the other hand, the graph size is increased by a factor  $S$ , and at most  $S$  augmenting paths have to be found, which leads to a complexity of  $O(ES^2)$ . The same-path heuristic may be implemented in different ways, but the most effective solution

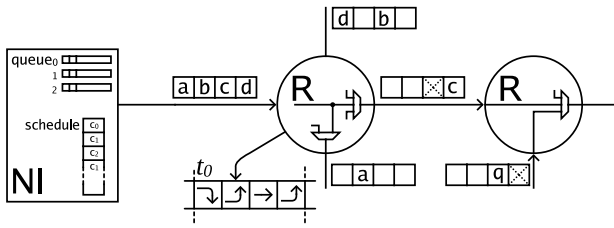


Fig. 3. Distributed routing architecture. The schedule ensures that no two packets will be delivered to the same link at the same time

is to integrate it with the normal path-finding used by the flow algorithm, by ensuring that the order of visiting links is the same that was used for the previous path. This approach would not increase the algorithm complexity.

The in-order path selection algorithm has a running time of  $O(k^3)$  where  $k$  is the number of paths, which is bounded by the number of slots  $S$ , hence the worst-case complexity is  $O(S^3)$ .

#### IV. HARDWARE IMPLEMENTATION

As mentioned in section III we address the guaranteed services mode of operation of the  $\mathcal{A}$ ethereal networks. For GS the network supports two possible implementations, distributed routing and source routing. In this section we will present implementation considerations regarding both cases.

##### A. Distributed routing

In the distributed routing architecture [17], all routers possess a slot table and are synchronized at flit level, which allows them to operate in lock-step. During each time-slot, a flit is routed to a pre-defined destination, based on the contents of the slot table. Routers are unaware of the final destination of a packet, but only of one crossbar traversal. The final destination of a packet thus depends only on the time it was inserted into the network, as shown in Figure 3.

One of the advantages of this technique is that a header does not have to be sent along each flit in order to determine its destination thus increasing the size of the useful payload. The disadvantage is that slot tables need to be distributed across all routers, and a configuration mechanism has to be provided. The routing is completely oblivious to the number of routes that are used, and our technique can be applied without any change to the hardware.

##### B. Source routing

In the source routing architecture, a single word header is added to the first flit of a sequence, which stores the entire route to the destination. Subsequent consecutive flits from GS traffic, following the same route do not need to repeat the header. We have considered in our experiments the overhead of including the header when multiple routes are used.

The source network interface is then responsible not only for determining the path the packets will follow, but also for ensuring that no collisions will occur with other GS packets. On the other hand, the advantage is that the route is not solely determined by flit entry time into the network, but as long as

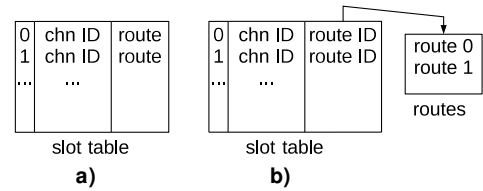


Fig. 4. Hardware implementations: a) directly storing routes in the slot table, b) with separate tables of routes

collision avoidance is ensured, several channels may use the same time slots.

An approach that takes advantage of this new feature is to let outgoing channels of an NI share the beginning of the path before they diverge toward their specific destinations. This approach was proposed in [30] under the name of channel trees.

We propose two multi-path routing implementations, one consisting of storing the route that should be used during each time slot, side-by-side into the same memory block and indexed with the same value as the slot-table, and another having separate tables storing the routes and only a route id be stored for each time slot. The two solutions are presented in figure 4.

The first solution is more efficient when routes are relatively short or the time slots are few, while the second is favorable when few different routes are in use. The second solution also has the advantage of being compatible with channel trees. The overhead is limited to the storage space the extra route id and storage space for the routes themselves, which amounts to tens to hundreds of bits per network interface, depending on the number of channels, routes and size of the slot table.

The changes in figure 4b have been implemented in hardware, and synthesized using Synopsys tools. We have found the overhead to be of 7.5% in terms of area for a network interface kernel with 4 channels and 16-word buffers, when 4 distinct paths are supported for each channel. It should be noted that this is probably an overestimate, as in a real design it may not be necessary to use multi-path routing for all channels, and 4 distinct paths is already in the upper range of expected usage. In terms of speed, we do not expect any negative impact, since the tables are generally static and reading can be pipelined to any extent found necessary.

#### V. EXPERIMENTAL RESULTS

For the purpose of evaluating the benefits of our proposal, the  $\mathcal{A}$ ethereal tool flow [23] has been extended in the following way. The new algorithms were added to the existing tools at source-code level and integration has been performed in order to use the same data structures.

The comparison was made against two single-path allocation algorithms available in the  $\mathcal{A}$ ethereal tool flow. One, which we will call the "classic" algorithm consists of a heuristic with polynomial running time, but without guarantees regarding the quality of the solutions while the second algorithm performs an exhaustive search, thus having an exponential running time in the worst-case.

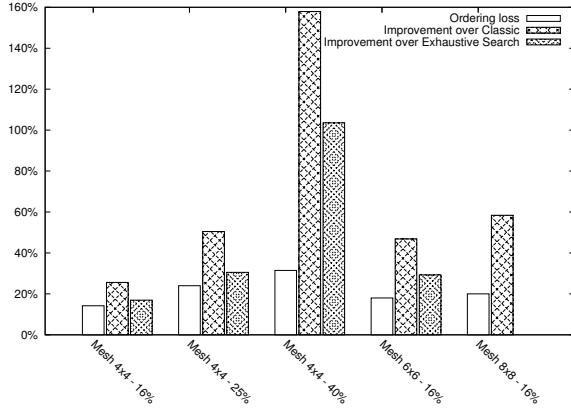


Fig. 5. Reordering overhead and relative improvement in allocated bandwidth

TABLE I

ALLOCATED BANDWIDTH OF SINGLE AND MULTI-PATH ALGORITHMS, IN WORDS/SLOT TABLE REVOLUTION AND AVERAGE NUMBER OF PATHS USED

Test	Class.	Exh.	MP bf. discard	MP w/ discard	Gain	paths
4x4-16%	16.73	17.96	24.48	21.01	16.9%	2.91
4x4-25%	8.72	10.06	17.28	13.13	30.5%	3.22
4x4-40%	2.02	2.57	7.63	5.23	103%	2.22
6x6-16%	14.64	16.64	26.24	21.51	29.2%	4.07
8x8-16%	13.35	-	26.45	21.15	58.4%	5.00

Background traffic was generated, random in both space and time. The source and destination were chosen with equal probability from the set of all nodes, and the bandwidth was chosen following a geometric distribution law capped by the maximum link bandwidth supported by the network. The background traffic was allocated using the classic algorithm from the *Æthereal* tool flow, with slots allocated in contiguous chunks where possible, subject to restrictions regarding slots that were already in use, starting at a slot position chosen at random.

On top of the background traffic we attempt to allocate channels of the maximum possible bandwidth using each of the algorithms. For the original algorithms in the *Æthereal* tool flow, we determine the maximum using binary search, while the flow algorithm produces the maximum directly. The channels are then discarded and a new allocation is performed. For all tests, the overhead of sending the source-routing headers was taken into consideration.

The results are presented in Figure 5, in the form of relative improvement of the proposed method, compared to the two existing methods. The slot occupation due to background traffic considered in our tests was 16, 25 and 40% for the 4x4 mesh topology and 16% for the larger topologies.

The result already takes into account the bandwidth discarded by Algorithm 1, but the loss is also represented for comparison. It can be observed that the gain is higher for scenarios with higher network occupation, as well as larger networks which offer higher path diversity. The numerical results are presented in table I, along with another important measure, which is the average number of paths employed by

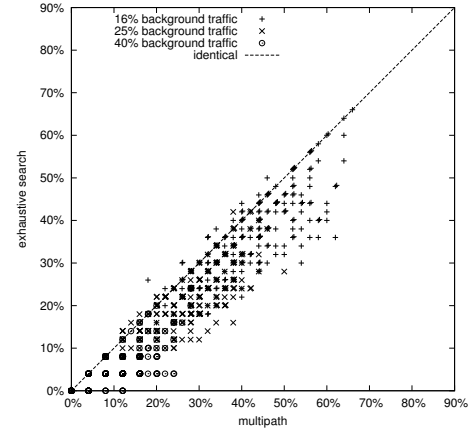


Fig. 6. Allocated bandwidth as a percentage of link capacity, 4-by-4 mesh network under different traffic loads

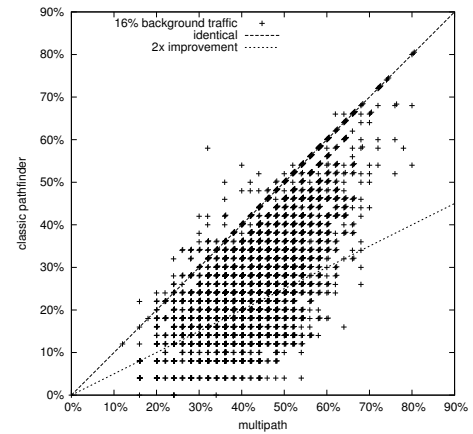


Fig. 7. Multi-path vs Classic allocation algorithms, 8-by-8 mesh 16% background load

the multi-path algorithm.

Figure 6 presents the results for all loads in the 4-by-4 mesh topology. Each of the points in the graph represents one allocated channel, with the x coordinate being the bandwidth allocated by the flow algorithm (ordering penalty included) and the y coordinate the bandwidth allocated by the single path approach.

The results show high variations from one test case to another. For many cases, the single path algorithms and the multi-path algorithm produce the same result. In a few cases, the single-path offers a better solution (the points above the diagonal). This is explained by the fact that the combination of the two algorithms, the flow algorithm and the path selection is not guaranteed to be optimal even though the individual algorithms are. In the vast majority of cases the multi-path algorithm performs better.

As the size of the network increases it can be observed that the advantage of the multi-path approach compared to the single-path solutions also increases. Figure 7 depicts a comparison of our solution with the classic single-path solution from the *Æthereal* tool flow on a network with 8-by-8 mesh topology. In this setting, the multi-path approach produces a solution with more than twice the bandwidth of the single-path

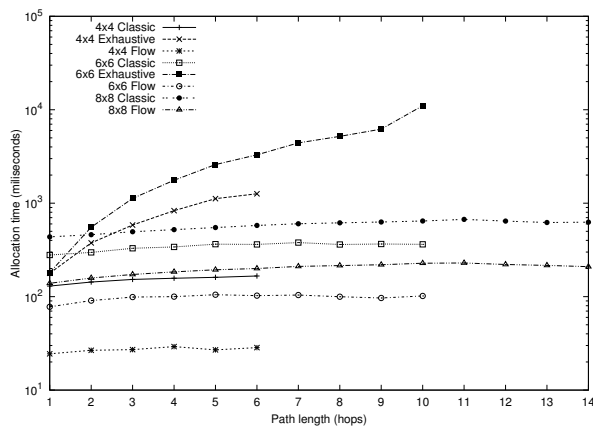


Fig. 8. Algorithm running time

approach in roughly 34% of the test-cases.

Although the common approach is to perform the allocation at design time, other authors have shown in [31] that it is also feasible to compute the allocation at run-time, directly on the embedded device. In order to perform allocation at run-time it is important to have an computationally efficient, low-cost allocation algorithm. The running times of the original *Æthereal* algorithms as well as the new flow algorithm are presented in Figure 8. Although asymptotically the flow algorithm has a higher complexity, it has performed the fastest in our tests. For the large 8x8 example, we did not find it feasible to run the exhaustive search because of memory and time constraints. In the case of the classic and flow algorithms it can also be observed that the distance between the source and destination nodes has little effect on execution time, while the duration of the exhaustive search grows rapidly.

## VI. CONCLUSIONS AND FUTURE WORK

In this paper we have studied the use of multi-path routing in networks with fixed resource allocation like *Æthereal*. Our tests confirmed that the multi-path technique, which was shown to provide benefits in large-scale networks, can provide a significant increase in delivered bandwidth. However it should be noted that the present benchmarks are synthetic, and only compare the performance of path finding algorithms on individual connections. The efficiency of a complete allocation flow based on the multi-path algorithm possibly in combination with other algorithms has yet to be studied.

We have also presented the implications this method on the implementation in hardware. The overhead is shown to be very low: a 7.5% increase in area of the network interface kernels. Regarded in the context of the entire network, the overhead would be even smaller. When distributed slot tables are used the overhead is nonexistent as no modification to the hardware is necessary. Another concern is the complexity of the path-finding algorithm, which is important if slot allocation is to be performed at run-time. We have shown that, despite having a larger complexity, in practice the multi-path algorithm can be faster than single-path solutions.

## REFERENCES

- [1] M. Sgroi, M. Sheets, A. Mihal, K. Keutzer, S. Malik, J. Rabaey, and A. Sangiovanni-vincentelli, "Addressing the system-on-a-chip interconnect woes through communication-based design," in *DAC*, 2001.
- [2] L. Benini and G. De Micheli, "Networks on chips: a new SoC paradigm," *Computer*, vol. 35, no. 1, Jan 2002.
- [3] C. J. Glass and L. M. Ni, "The turn model for adaptive routing," *SIGARCH Comput. Archit. News*, vol. 20, no. 2, 1992.
- [4] G.-M. Chiu, "The odd-even turn model for adaptive routing," *IEEE Trans. Parallel Distrib. Syst.*, vol. 11, no. 7, 2000.
- [5] W. J. Dally and H. Aoki, "Deadlock-free adaptive routing in multicomputer networks using virtual channels," *IEEE Trans. Parallel Distrib. Syst.*, vol. 4, no. 4, 1993.
- [6] J. Duato, "On the design of deadlock-free adaptive routing algorithms for multicomputers: design methodologies," in *PARLE*, 1991.
- [7] S. Vutukury, "A simple approximation to minimum-delay routing," in *ACM SIGCOMM*, 1999.
- [8] I. Cidon, R. Rom, and Y. Shavitt, "Analysis of multi-path routing," *IEEE/ACM Trans. Netw.*, vol. 7, no. 6, 1999.
- [9] —, "Multi-path routing combined with resource reservation," *INFOCOM*, vol. 1, Apr 1997.
- [10] S. Murali, D. Atienza, L. Benini, and G. De Micheli, "A Method for Routing Packets Across Multiple Paths in NoCs with In-Order Delivery and Fault-Tolerance Guarantees," *VLSI-Design Journal*, 2007.
- [11] L. M. Ni and P. K. McKinley, "A survey of wormhole routing techniques in direct networks," *Computer*, vol. 26, no. 2, 1993.
- [12] J. Hu and R. Marculescu, "DyAD: Smart routing for networks-on-chip," in *DAC*, 2004.
- [13] M. Li, Q.-A. Zeng, and W.-B. Jone, "DyXY: A proximity congestion-aware deadlock-free dynamic routing method for network on chip," in *DAC*, 2006.
- [14] G. Ascia, V. Catania, M. Palesi, and D. Patti, "A new selection policy for adaptive routing in network on chip," in *EHAC*, 2006.
- [15] I.-G. Lee, J. Lee, and S.-C. Park, "Adaptive routing scheme for NoC communication architecture," in *ICACT*, vol. 2, 2005.
- [16] M. A. A. Faruque, T. Ebi, and J. Henkel, "Run-time adaptive on-chip communication scheme," in *ICCAD*, 2007.
- [17] K. Goossens, J. Dielissen, and A. Radulescu, "*Æthereal* network on chip: Concepts, architectures, and implementations," *IEEE Design & Test of Computers*, vol. 22, no. 5, 2005.
- [18] M. Millberg, E. Nilsson, R. Thid, and A. Jantsch, "Guaranteed bandwidth using looped containers in temporally disjoint networks within the Nostrum network on chip," in *DATE*, 2004.
- [19] J. Liang, S. Swaminathan, and R. Tessier, "aSoc: A scalable, single-chip communications architecture," in *PACT*, 2000.
- [20] J. M. Nolen and R. N. Mahapatra, "Time-division-multiplexed test delivery for NoC systems," *IEEE Des. & Test*, vol. 25, no. 1, 2008.
- [21] P. Wolkotte, G. Smit, G. Rauwerda, and L. Smit, "An energy-efficient reconfigurable circuit-switched network-on-chip," in *IPDPS*, April 2005.
- [22] J. Liu, L.-R. Zheng, and H. Tenhunen, "Interconnect intellectual property for network-on-chip (NoC)," *J. Syst. Archit.*, vol. 50, no. 2-3, 2004.
- [23] A. Hansson, K. Goossens, and A. Rădulescu, "A unified approach to mapping and routing on a network-on-chip for both best-effort and guaranteed service traffic," *VLSI Design*, 2007.
- [24] L. Ford and D. Fulkerson, *Flows in Networks*, 1962.
- [25] J. Edmonds and R. M. Karp, "Theoretical improvements in algorithmic efficiency for network flow problems," *J. ACM*, vol. 19, no. 2, 1972.
- [26] C. Schensted, "Longest increasing and decreasing subsequences," *Canad. J. Math*, 1961.
- [27] M. H. Albert, M. D. Atkinson, D. Nussbaum, J.-R. Sack, and N. Santoro, "On the longest increasing subsequence of a circular list," *Information Processing Letters*, vol. 101, no. 2, 2007.
- [28] D. E. Knuth, "Big omicron and big omega and big theta," *SIGACT News*, vol. 8, no. 2, 1976.
- [29] E. W. Dijkstra, "A note on two problems in connexion with graphs," *Numerische Mathematik*, vol. 1, 1959.
- [30] A. Hansson, M. Coenen, and K. Goossens, "Channel trees: reducing latency by sharing time slots in time-multiplexed networks on chip," in *CODES+ISSS*, 2007.
- [31] T. Marescaux, B. Bricke, P. Debacker, V. Nolle, and H. Corporaal, "Dynamic time-slot allocation for QoS enabled networks on chip," in *ESTIMedia*, 2005.