

SSH with X11

Sander Stuijk

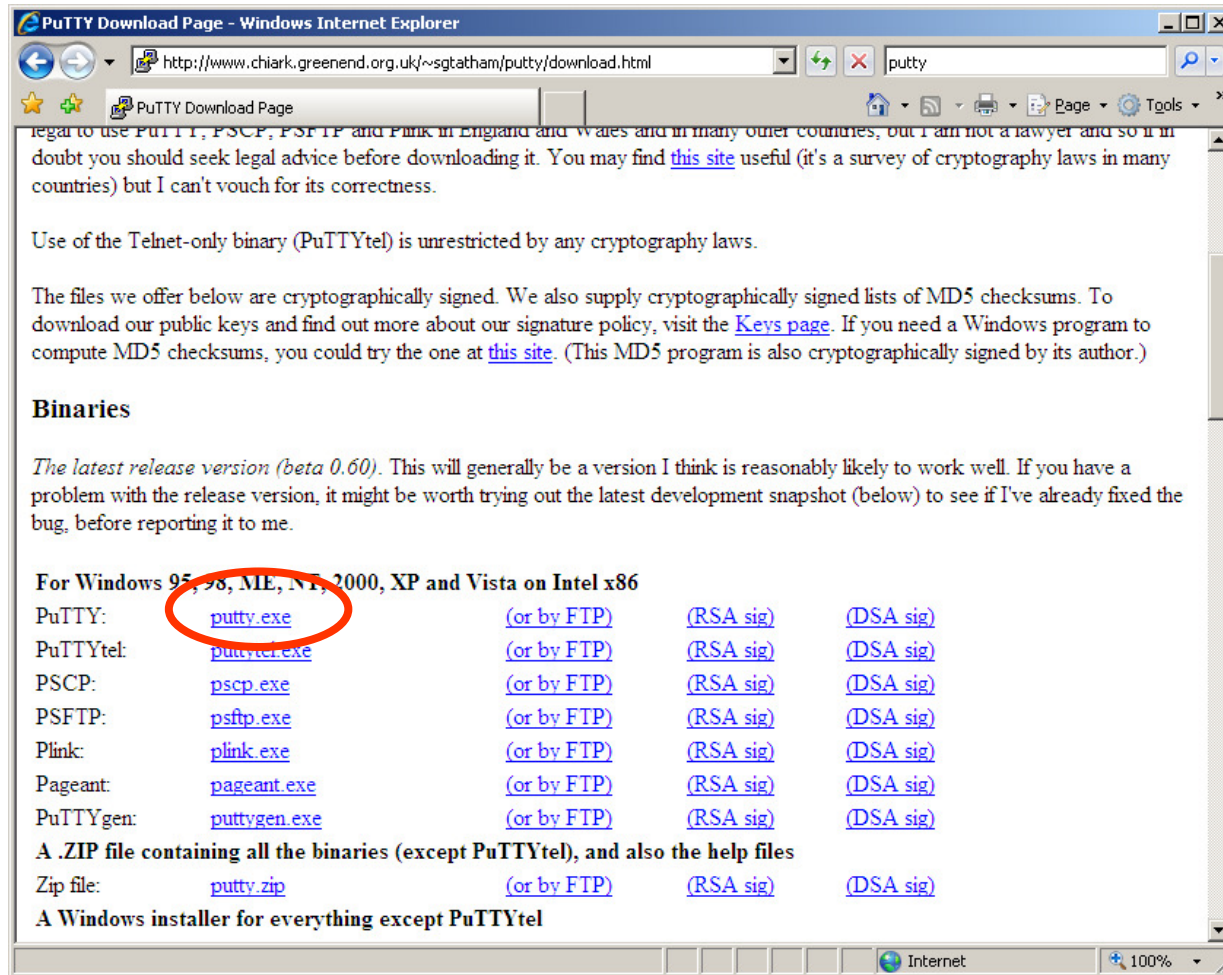
Department of Electrical Engineering
Electronic Systems



- Installation (page 3-16)
- Usage (page 13-17)

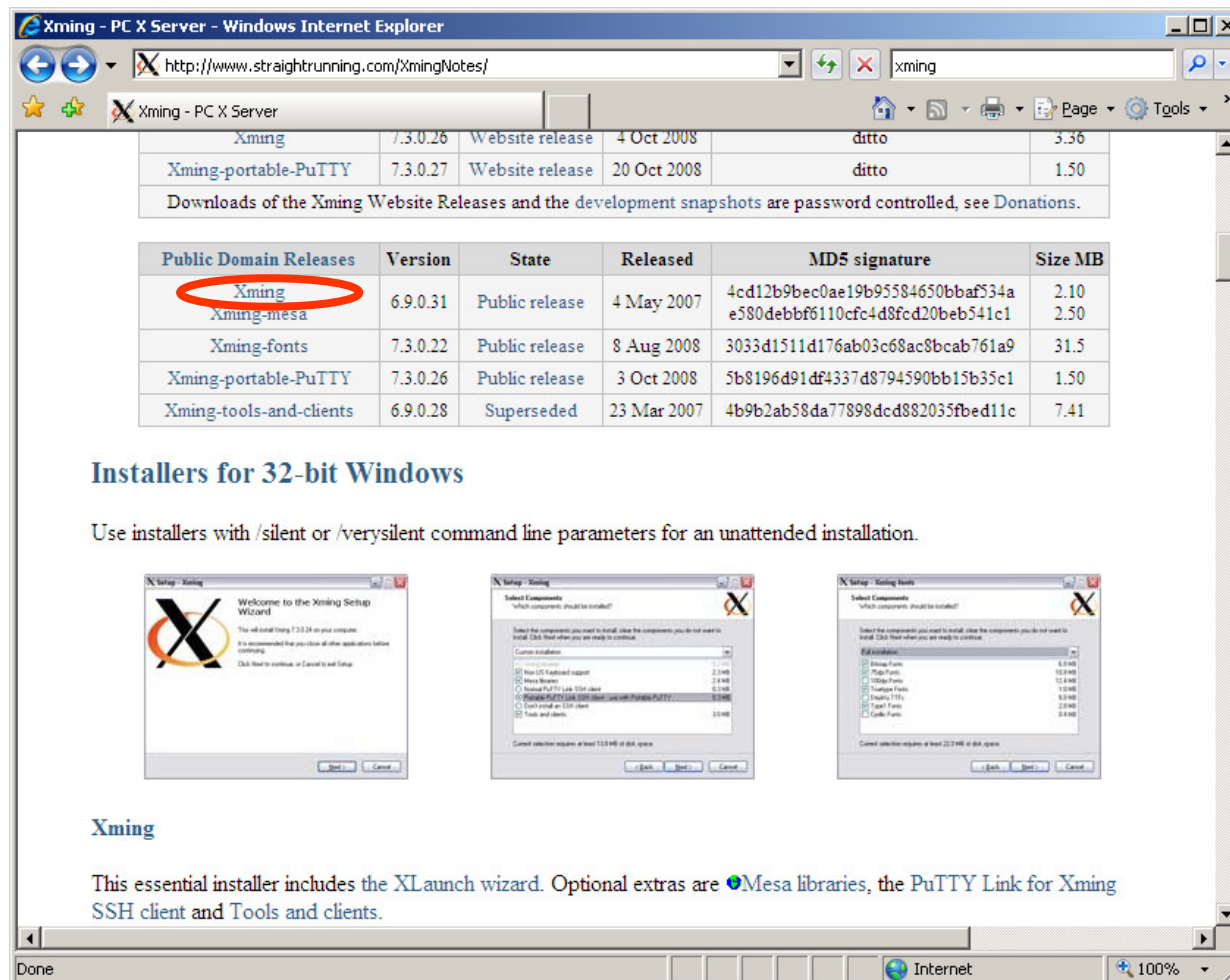
3 SSH client installation

- Download the latest 'putty.exe' from:
<http://www.chiark.greenend.org.uk/~sgtatham/putty/download.html>



4 X11 installation

- Download the latest 'Xming' from:
<http://www.straightrunning.com/XmingNotes/>



The screenshot shows a web browser window with the following content:

Public Domain Releases	Version	State	Released	MD5 signature	Size MB
<u>Xming</u>	6.9.0.31	Public release	4 May 2007	4cd12b9bec0ae19b95584650bbaf534a	2.10
Xming-mesa	6.9.0.31	Public release	4 May 2007	e580debbf6110cfc4d8fcd20beb541c1	2.50
Xming-fonts	7.3.0.22	Public release	8 Aug 2008	3033d1511d176ab03c68ac8bcab761a9	31.5
Xming-portable-PuTTY	7.3.0.26	Public release	3 Oct 2008	5b8196d91df4337d8794590bb15b35c1	1.50
Xming-tools-and-clients	6.9.0.28	Superseded	23 Mar 2007	4b9b2ab58da77898dc882035fbed11c	7.41

Installers for 32-bit Windows

Use installers with /silent or /verysilent command line parameters for an unattended installation.

The screenshot shows three screenshots of the Xming Setup Wizard:

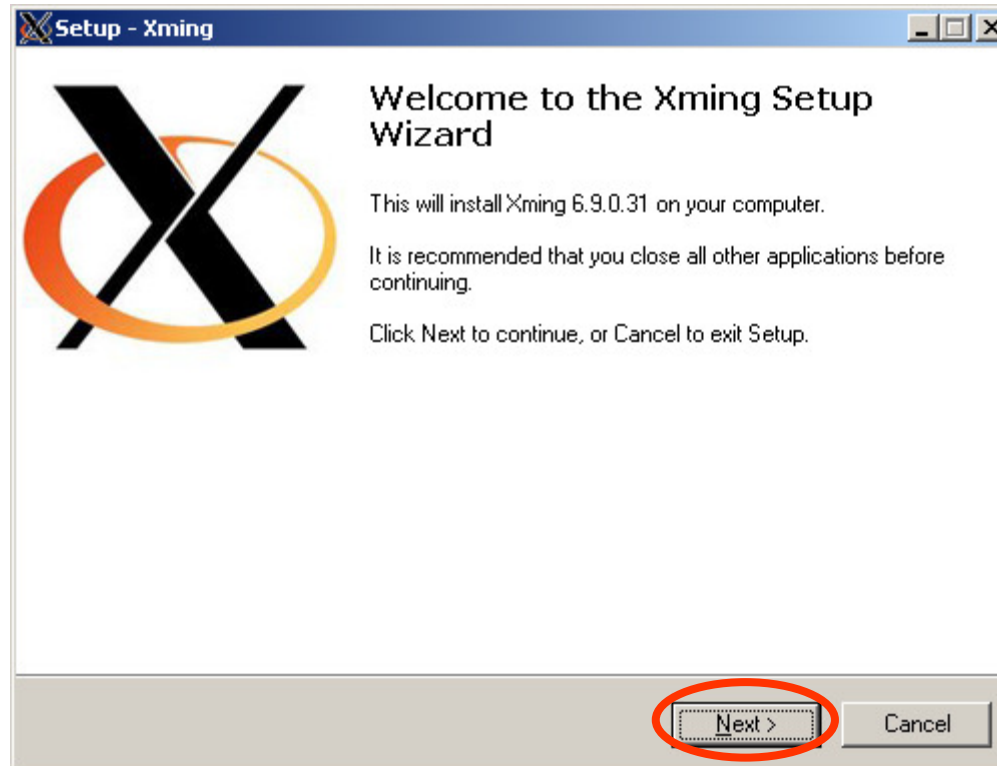
- Welcome to the Xming Setup Wizard. The wizard will install Xming 7.3.0.26 on your computer. It is recommended that you close all other applications before continuing. Click Next to continue, or Cancel to end Setup.
- Select Components. Which components should be installed? Components include: New X11 Keyboard support (2.24MB), Mesa Libraries (2.44MB), Xming Portable PuTTY Link (1.50MB), Xming Portable PuTTY Link (1.50MB), Xming Tools and Clients (7.41MB), and Tools and Clients (7.41MB). Current selection requires at least 113.0 MB of disk space.
- Select Components. Which components should be installed? Components include: Xming Fonts (6.0 MB), Xming Fonts (6.0 MB), Xming Fonts (6.0 MB), Xming Fonts (6.0 MB), Xming Fonts (6.0 MB), Xming Fonts (6.0 MB), Xming Fonts (6.0 MB), and Xming Fonts (6.0 MB). Current selection requires at least 22.0 MB of disk space.

Xming

This essential installer includes the XLaunch wizard. Optional extras are **Mesa libraries**, the **PuTTY Link for Xming SSH client** and **Tools and clients**.

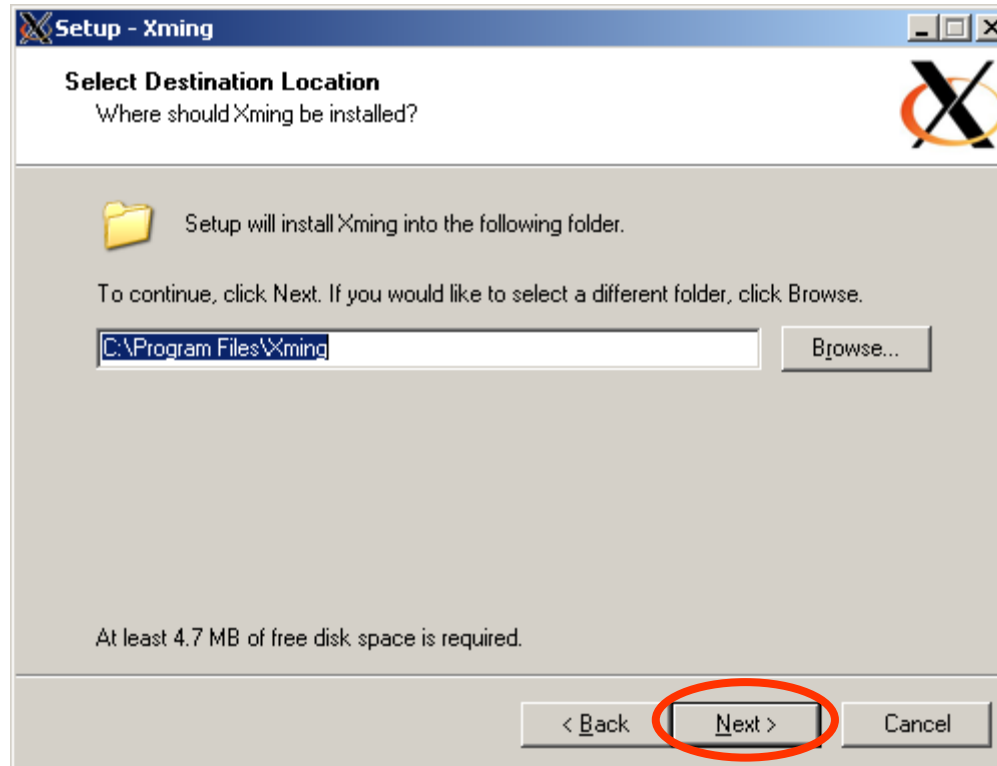
5 X11 installation

- Click 'Next' to continue



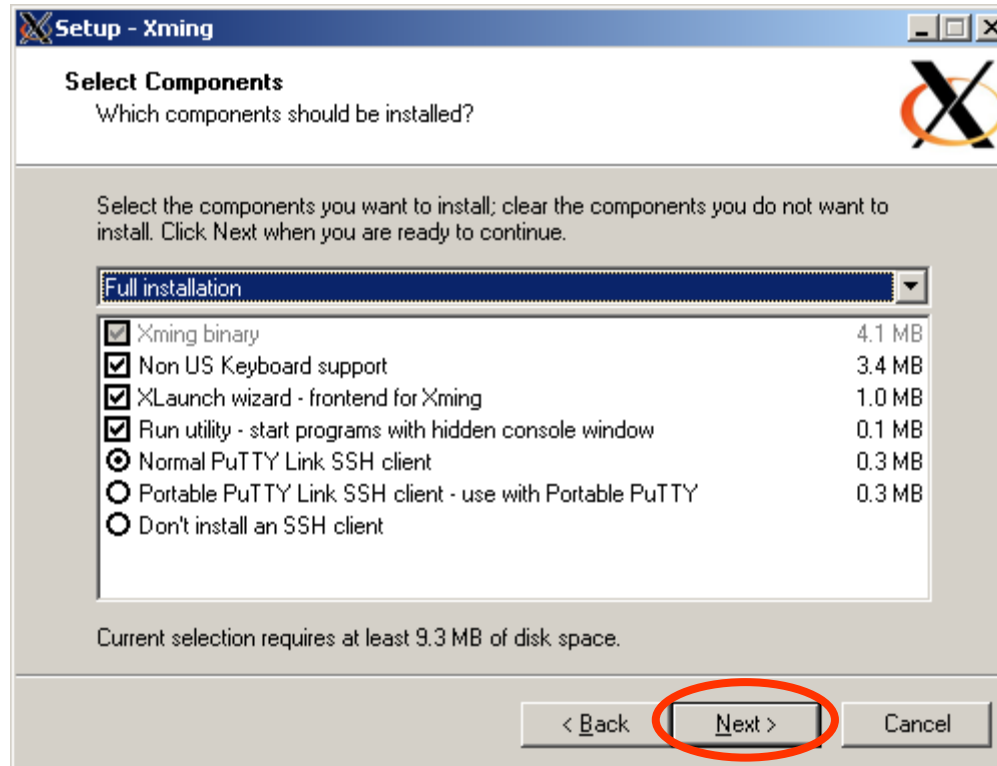
6 X11 installation

- Click 'Next' to continue

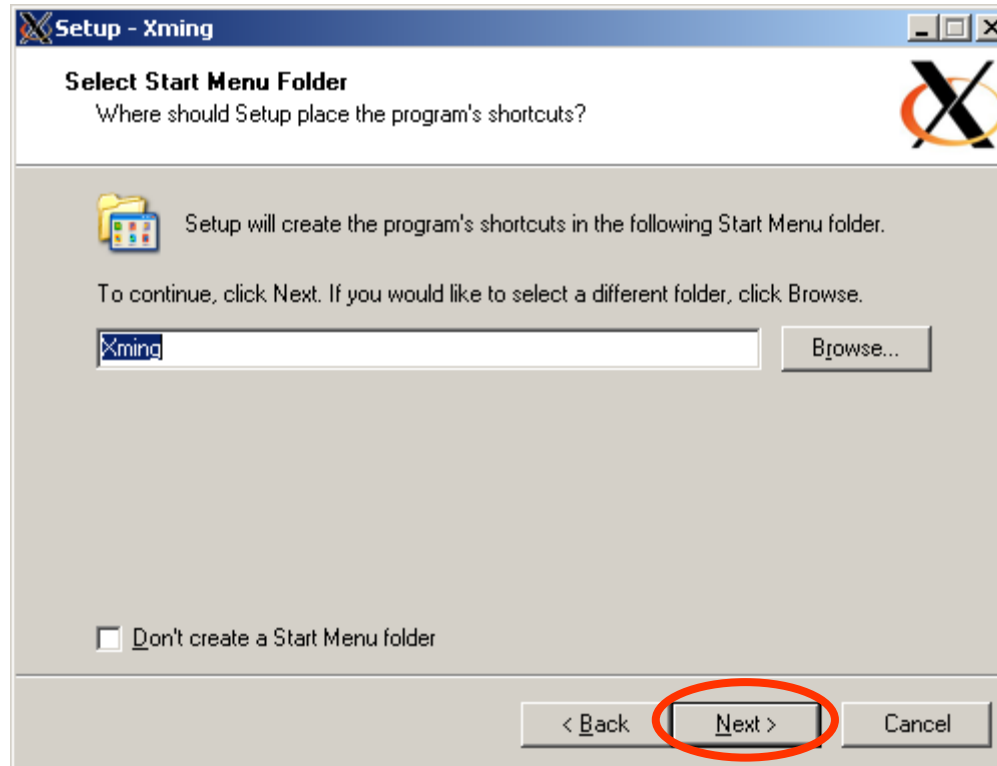


7 X11 installation

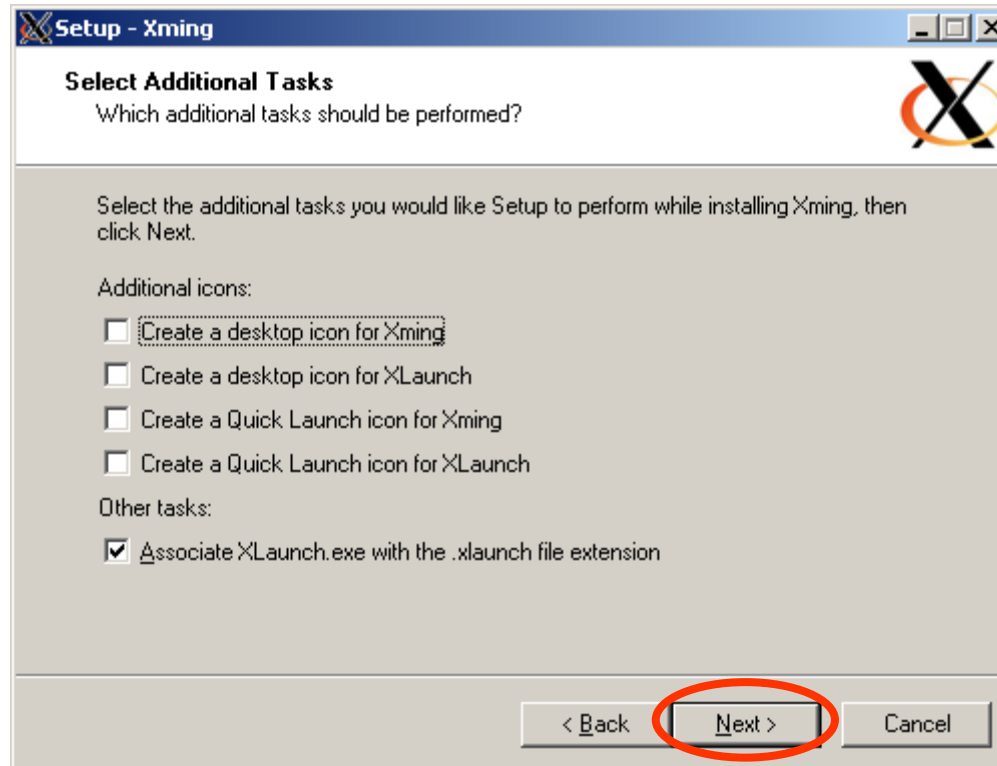
- Click 'Next' to continue



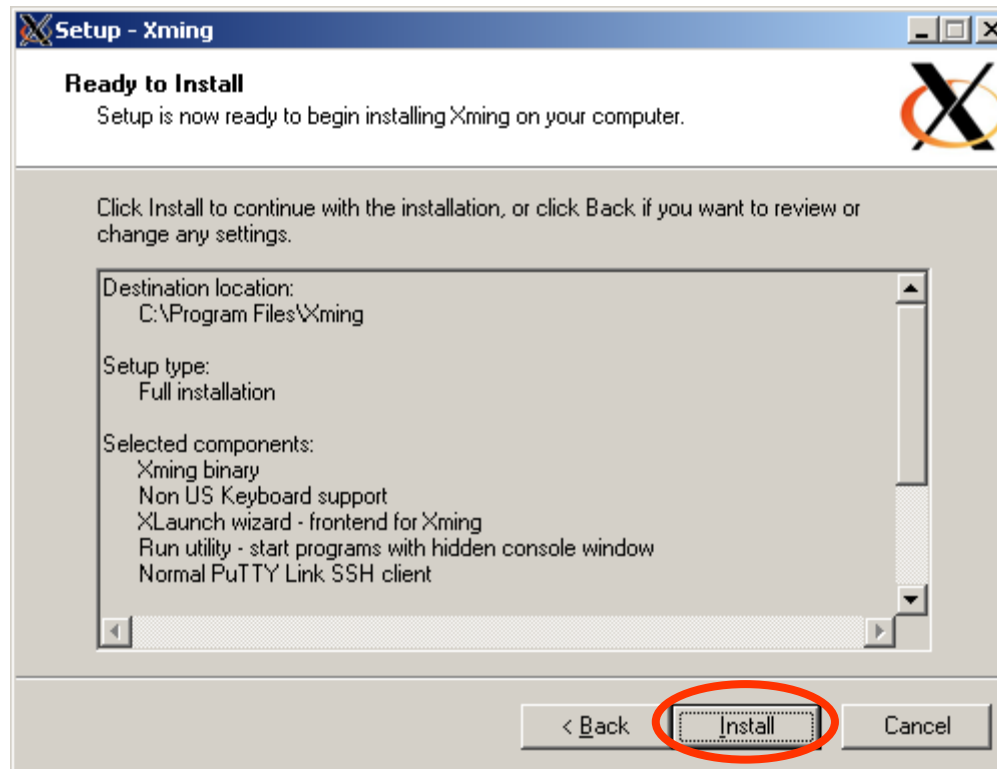
- Click 'Next' to continue



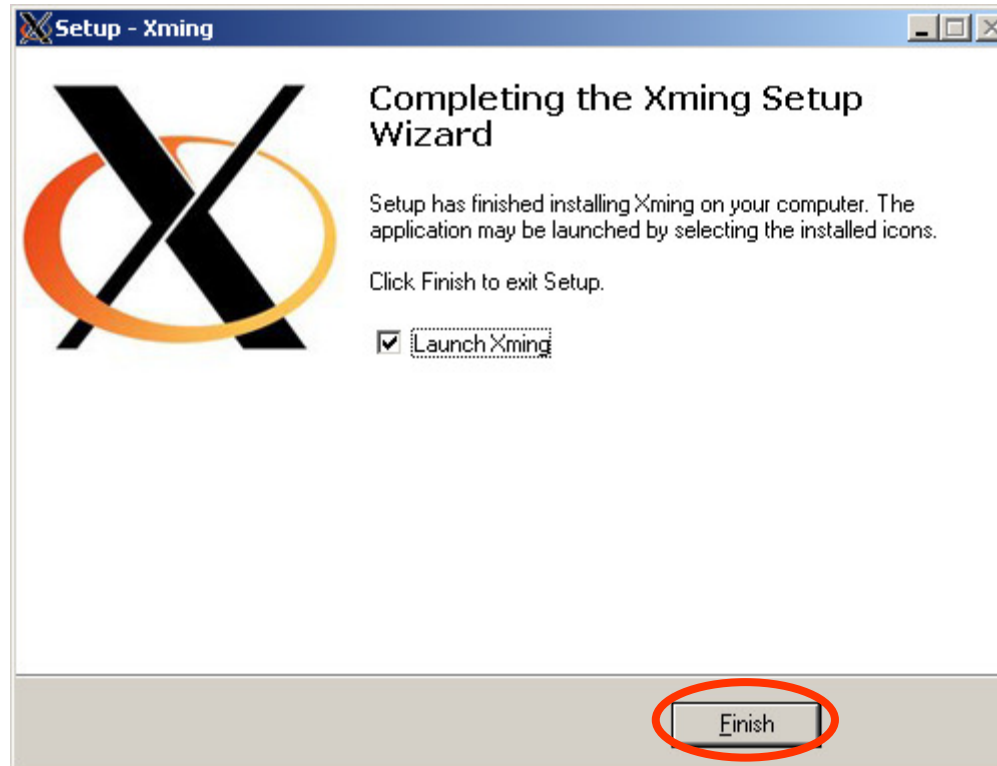
- Click 'Next' to continue



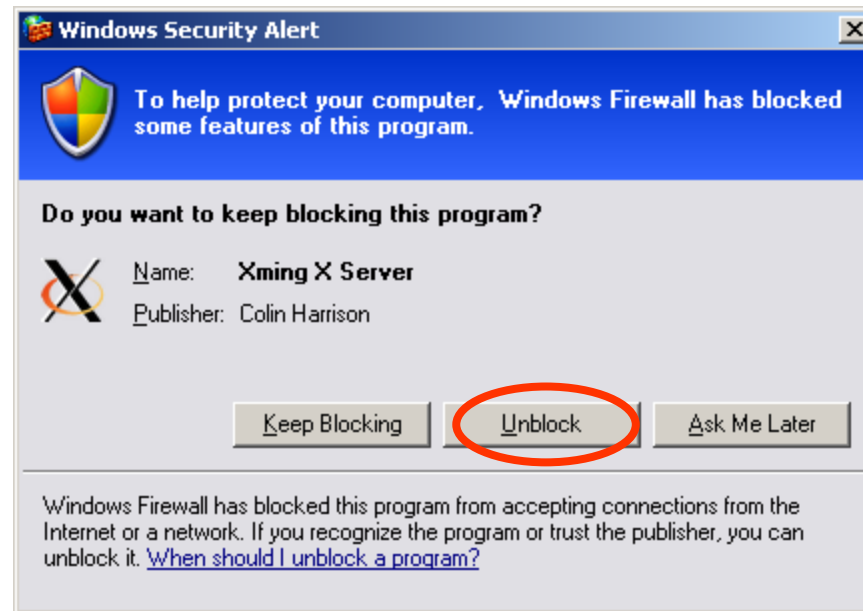
- Click 'Install' to continue



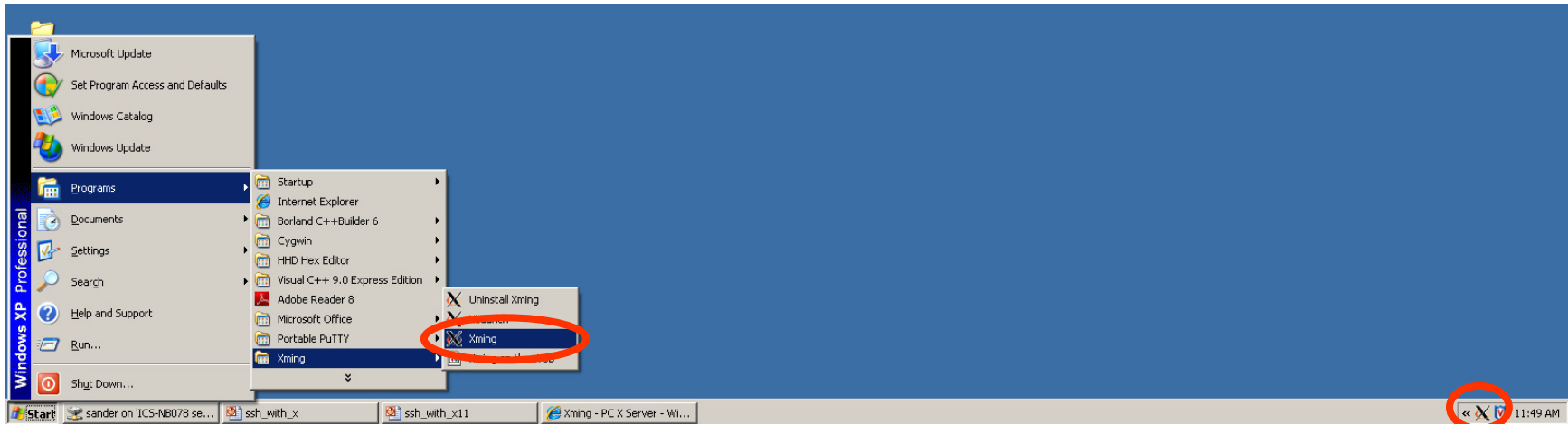
- Click 'Finish' to end the installation



- Click 'Unblock' to open a port for the X11 server



- Start the X11 server through the start menu



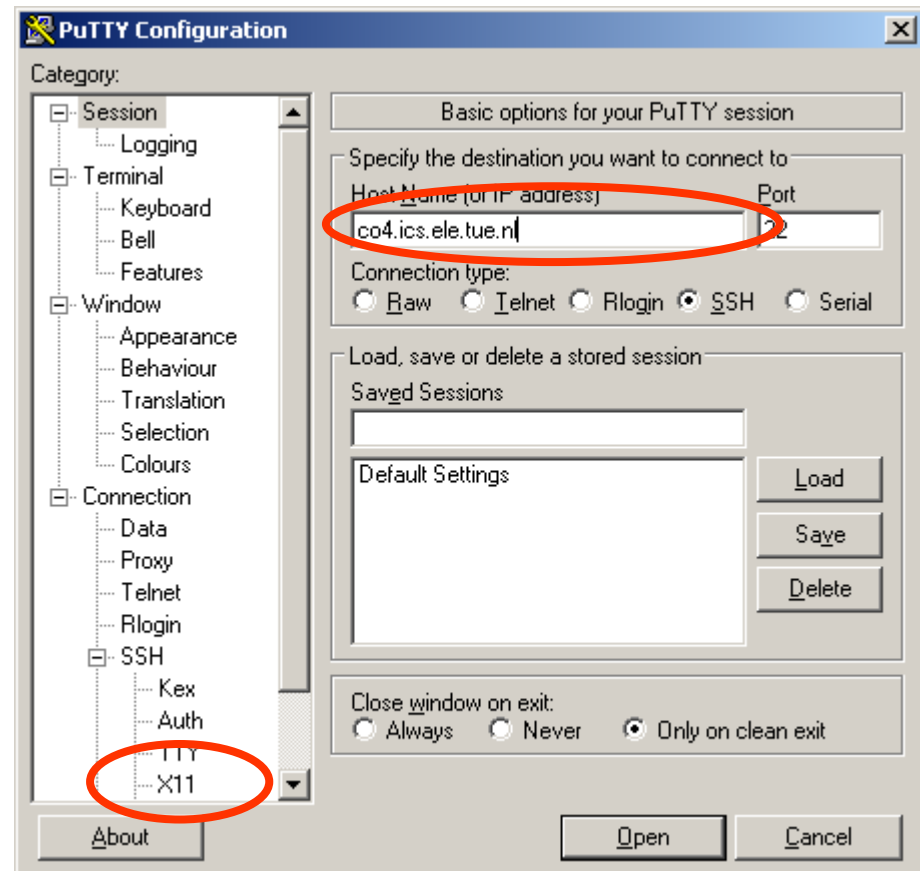
- A new icon will appear on the icon tray

14 Connecting to the server

- Double click on the putty icon:

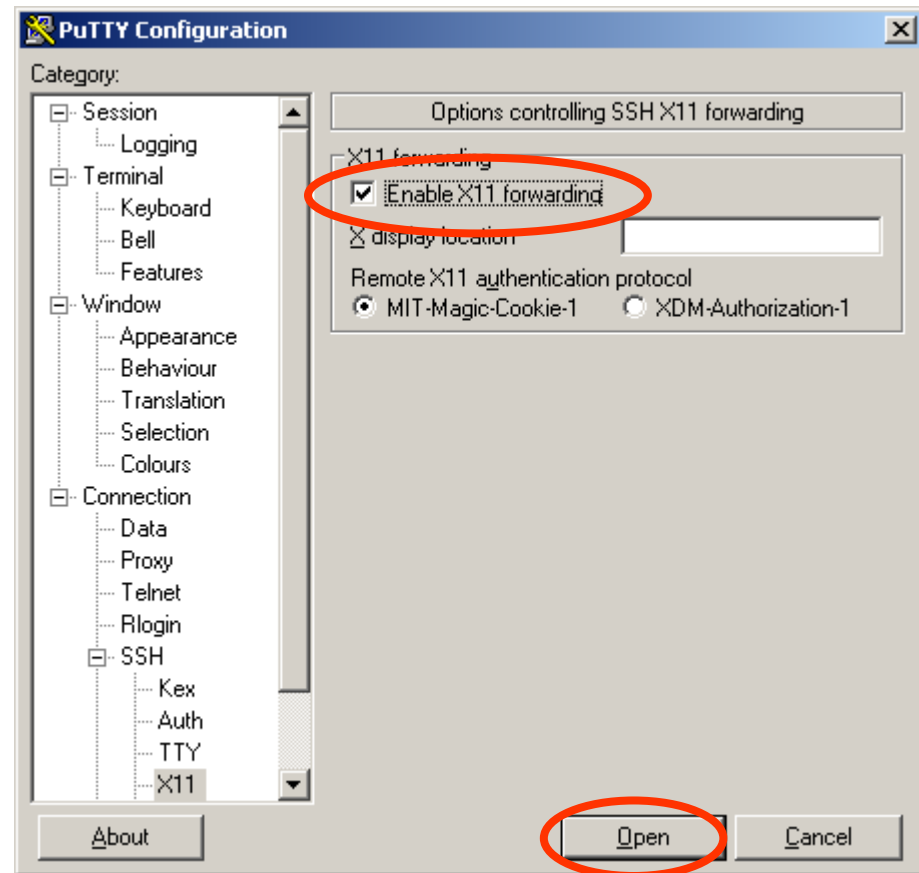


- Fill in the following information:
 - hostname (4 options)
 - co4.ics.ele.tue.nl
 - co5.ics.ele.tue.nl
 - co6.ics.ele.tue.nl
 - co7.ics.ele.tue.nl
 - protocol
 - ssh
 - switch to the 'SSH/Tunnels' page



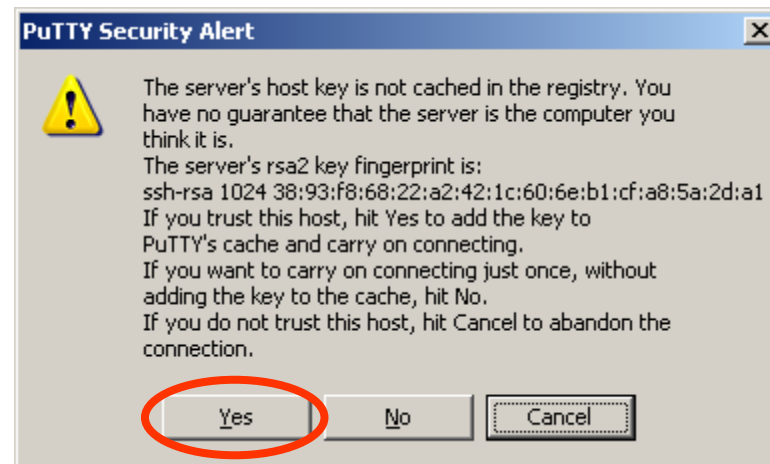
15 Connecting to the server

- Enable X11 forwarding
- Open the connection



16 Connecting to the server

- Accept the key



17 Connecting to the server

- Enter your username and password

